

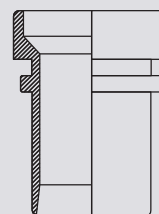
08-Alimentación



Materiales disponibles:

SS316

Codigo HS73072910



Hembra P/Manguera

ALIMENTACIÓN DIN 11851 Hembra Para manguera

DN	INCH	SS316							
		Ref.	Peso/Gr.	Ref.	Peso/Gr.	Ref.	Peso/Gr.	Ref.	Peso/Gr.
06	1/8"	1204006	-						
12	1/2"	1204012	-						
19	3/4"	1204019	-						
25	1"	1204025	-						
32	1 1/4"	1204032	-						
40	1 1/2"	1204040	-						
50	2"	1204050	-						
65	2 1/2"	1204065	-						
75	3"	1204075	-						
80	G3"	1204080	-						
100	4"	1204100	-						



Materiales disponibles:

SS316

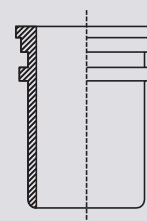
Codigo HS73072910

SILICONA

Codigo HS40169300

EPDM

Codigo HS40169300



Macho P/Manguera / Juntas

ALIMENTACIÓN DIN 11851 Macho Para manguera / Junta

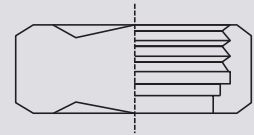
DN	INCH	SS316		Silicona Transparente		EPDM Blue			
		Ref.	Peso/Gr.	Ref.	Peso/Gr.	Ref.	Peso/Gr.	Ref.	Peso/Gr.
06	1/8"	1205006	-						
12	1/2"	1205012	-						
19	3/4"	1205019	-						
25	1"	1205025	-	1209825	-	1209925	-		
32	1 1/4"	1205032	-	1209832	-	1209932	-		
40	1 1/2"	1205040	-	1209840	-	1209940	-		
50	2"	1205050	-	1209850	-	1209950	-		
65	2 1/2"	1205065	-	1209865	-	1209965	-		
75	3"	1205075	-	1209875	-	1209975	-		
80	G3"	1205080	-	1209880	-	1209980	-		
100	4"	1205100	-	1209810	-	1209910	-		



Materiales disponibles:

SS304

Codigo HS73072910



Tuerca DIN

ALIMENTACIÓN DIN 11851 Tuerca DIN

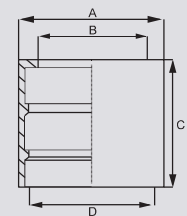
DN	INCH	SS304							
		Ref.	Peso/Gr.	Ref.	Peso/Gr.	Ref.	Peso/Gr.	Ref.	Peso/Gr.
06	1/8"	1206006	-						
12	1/2"	1206012	-						
19	3/4"	1206019	-						
25	1"	1206025	-						
32	1 1/4"	1206032	-						
40	1 1/2"	1206040	-						
50	2"	1206050	-						
65	2 1/2"	1206065	-						
75	3"	1206075	-						
100	4"	1206100	-						



Materiales disponibles:

SS316

Codigo HS73072910



Campana

ALIMENTACIÓN DIN 11851 Campana

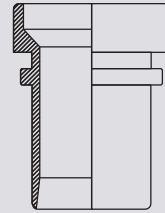
DN	INCH	SS316		Hose	A	B	C	D	
		Ref.	Peso/gr	mm	mm	mm	mm	mm	
06	1/8"	1207006	-						
12	1/2"	1207012	0.06	13 X 4	28.5	20.5	42.0	22.2	
19	3/4"	1207019	0.10	20 x 6	39.8	27.7	42.0	32.4	
25	1"	1207025	0.12	25 x 7	47.5	34.4	42.0	40.6	
32	1 1/4"	1207032	0.13	32 X 6	52.0	40.7	42.0	45.4	
40	1 1/2"	1207040	0.19	38 x 6,5	60.0	47.1	44.5	53.3	
50	2"	1207050	0.39	50 x 8	77.0	60.7	60.0	67.9	
65	2 1/2"	1207065	0.55	65 x 8	93.0	74.7	70.0	82.9	
75	3"	1207075	0.70	75 x 8	102.7	86.7	83.0	92.9	
80	3"	1207080	1.05	75 x 12	114.0	89.6	83.0	101.8	
100	4"	1207100	1.47	100 x 10	135.0	113.2	99.0	122.4	



Materiales disponibles:

SS316

Codigo HS73072910



Macho Para Manguera

MACON Macho Para Manguera

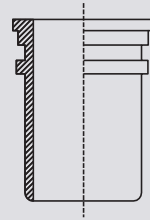
DN	SS316							
	Ref.	Peso/Gr.	Ref.	Peso/Gr.	Ref.	Peso/Gr	Ref.	Peso/Gr.
40	MACFE040	-						
50	MACFE050	-						
63	MACFE063	-						
70	MACFE070	-						
76	MACFE076	-						
80	MACFE080	-						
100	MACFE100	-						



Materiales disponibles:

SS316

Codigo HS73072910



Hembra Para Manguera

MACON Hembra Para Manguera

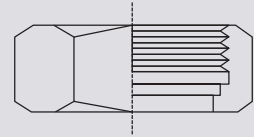
DN	SS316							
	Ref.	Peso/Gr.	Ref.	Peso/Gr.	Ref.	Peso/Gr	Ref.	Peso/Gr.
40	MACMA040	-						
50	MACMA050	-						
63	MACMA063	-						
70	MACMA070	-						
76	MACMA076	-						
80	MACMA080	-						
100	MACMA100	-						



Materiales disponibles:

SS304

Codigo HS73072910



Tuerca para Hembra

MACON Tuerca para Hembra

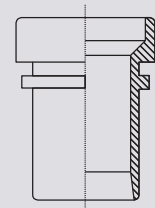
DN	SS304		Ref.	Peso/Gr.	Ref.	Peso/Gr.	Ref.	Peso/Gr.
	Ref.	Peso/Gr.						
40	MACNU040	-						
50	MACNU050	-						
63	MACNU063	-						
70	MACNU070	-						
76	MACNU076	-						
80	MACNU080	-						
100	MACNU100	-						



Materiales disponibles:

SS316

Codigo HS73072910



Hembra Sin Tuerca

SMS 1145 Alimentación Hembra Sin Tuerca

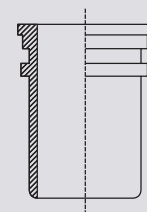
DN	INCH	SS316		Ref.	Peso/Gr.	Ref.	Peso/Gr.	Ref.	Peso/Gr.
		Ref.	Peso/Gr.						
25	1"	1404025	-						
32	1 1/4"	1404032	-						
40	1 1/2"	1404040	-						
50	2"	1404050	-						
65	2 1/2"	1404065	-						
75	3"	1404075	-						
100	4"	1404100	-						



Materiales disponibles:

SS316

Codigo HS73072910



Macho Para Manguera

SMS 1145 Alimentación Macho Para Manguera

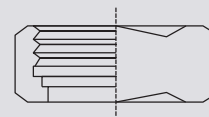
DN	INCH	SS316							
		Ref.	Peso/Gr.	Ref.	Peso/Gr.	Ref.	Peso/Gr.	Ref.	Peso/Gr.
25	1"	1405025	-						
32	1 1/4"	1405032	-						
40	1 1/2"	1405040	-						
50	2"	1405050	-						
65	2 1/2"	1405065	-						
75	3"	1405075	-						
100	4"	1405100	-						



Materiales disponibles:

SS316

Codigo HS73072910



Tuerca DIN

SMS 1145 Alimentación Nut

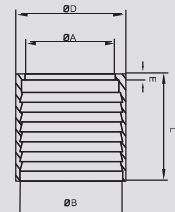
DN	INCH	SS316							
		Ref.	Peso/Gr.	Ref.	Peso/Gr.	Ref.	Peso/Gr.	Ref.	Peso/Gr.
25	1"	1406025	-						
32	1 1/4"	1406032	-						
40	1 1/2"	1406040	-						
50	2"	1406050	-						
65	2 1/2"	1406065	-						
75	3"	1406075	-						
100	4"	1406100	-						



Materiales disponibles:

SS304

Codigo HS73072910



Campana

FERRULE Alimentación Campana

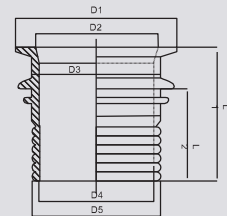
DN	SS304		A	B	D	E	L	
	Ref.	Peso/Gr.	mm	mm	mm	mm	mm	
25	1208025	-	32,5	39	44,5	3	41	
25	1208026	-	32,5	41	46,5	3	46	
32	1208032	-	40	47	54	3	41	
32	1208033	-	40	53	59	3	46	
40	1208042	-	45,5	52,5	60,3	3	41	
40	1208041	-	45,5	58	66	3	46	
50	1208052	-	60	67	74,5	3,5	55	
50	1208051	-	60	71	78,5	3,5	55	
65	1208067	-	73,5	82	89,5	4	65	
65	1208066	-	73,5	86	93,5	4	71	
75	1208075	-	85,5	93,6	101,6	4	83	
75	1208076	-	85,5	93,6	101,6	4	87	
100	1208100	-	113	120	130	5	101	



Materiales disponibles:

SS316

Codigo HS73072910



Tri-clamp Coupling Con Para Manguera

TRI-CLAMP Tri-clamp Para Manguera

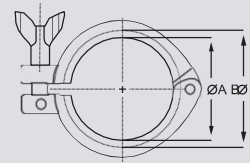
DN	INCH	SS316							
		Ref.	D1	D2	D3	D4	D5	L1	L2
12	1/2"	1218012	50,50	32,00	29,00	8,00	12,00	48,80	31,80
19	3/4"	1218019							
25	1"	1218025	50,50	22,60	38,00	21,00	25,40	63,50	43,00
40	1 1/2"	1218040	50,50	35,60	38,60	33,50	38,00	66,50	43,00
50	2"	1218050	64,00	48,60	51,60	46,00	50,80	74,50	51,00
65	2 1/2"	1218065	77,50	60,30	64,10	58,50	63,50	92,50	68,00
75	3"	1218075	91,00	72,90	76,70	70,10	76,20	107,50	82,00
100	4"	1218100	119,00	94,60	102,50	94,60	101,60	123,50	97,00



Materiales disponibles:

SS316

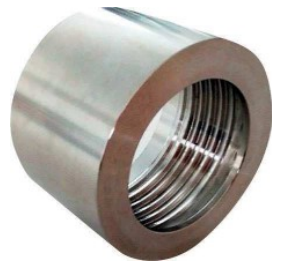
Codigo HS73072910



Abrazadera Tri-clamp

TRI-CLAMP Abrazadera Tri-clamp

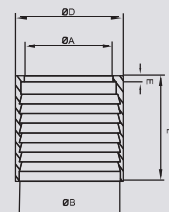
DN	SS316		ØA	ØB				
	Ref.	Peso/Gr.						
10 - 20	1219010	-	27.8	37.0				
25 - 38	1219025	-	44.4	53.6				
50	1219050	-	57.8	67				
65	1219065	-	84	94.2				
75	1219075	-	99	109.2				
100	1219100	-	110	122.2				
200	1219200-6	-	205	220				



Materiales disponibles:

SS304

Codigo HS73072910



Casquillo

TRI-CLAMP Casquillo

DN	SS304		A	B	D	E	L	
	Ref.	Peso/Gr.						
20	1217020	-	27	32	39	3	44	
25	1217025	-	32,5	39	46,5	3	46	
25	1217026	-	32,5	37	44,5	3	35	
32	1217032	-	40	52	59	3	46	
32	1217033	-	40	46	53	3	40	
40	1217040	-	45,5	58	66	3	46	
40	1217041	-	46	53	61	3	42	
50	1217050	-	60	71	78,5	3,5	55	
50	1217051	-	58	66	73,5	3,5	50	
65	1217065	-	73,5	86	93,5	4	71	
65	1217066	-	73,5	80	87,5	4	71	
75	1217067	-	85,5	93,6	101,6	4	87	