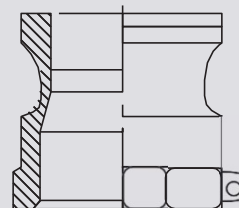


01-RAKLOK



Materiales disponibles:

- SS316 Codigo HS73072910
- ALU A 356 T6 Codigo HS76090000
- MS C85700 Codigo HS74122000
- PP Codigo HS39174000
- Reforzada con 25% hasta 30% de fibra de vidrio



Macho/BSP/Hembra

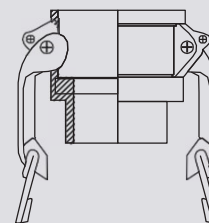
RAKLOKA Adaptador con rosca hembra, disponibles en BSPP y NPT

INCH	DN	ALU		SS316		MS		PP	
		Ref.	Peso/Gr.	Ref.	Peso/Gr.	Ref.	Peso/Gr.	Ref.	Peso/Gr.
1/2"	DN13	004100	0.02	004140	0.07	004120	0.07	004112	0.02
1/2"-3/4"	DN 13 x DN19			004139	-			004131	-
3/4"	DN19	004101	0.04	004141	0.11	004121	0.11	004132	0.02
1"	DN25	004102	0.05	004142	0.15	004122	0.15	004133	0.03
1 1/4"	DN32	004103	0.09	004143	0.24	004123	0.21	004113	0.05
1 1/4" - 1 1/2"	DN32 XDN38							004134	-
1 1/2"	DN38	004104	0.11	004144	0.32	004124	0.29	004135	0.07
2"	DN50	004105	0.15	004145	0.42	004125	0.35	004136	0.09
2 1/2"	DN63	004106	0.24	004146	0.71	004126	0.72	004114	0.125
3"	DN75	004107	0.27	004147	0.73	004127	0.73	004137	0.21
4"	DN100	004108	0.58	004148	1.42	004128	1.48	004138	0.38
5"	DN125	004109	0.84	004149	1.92	004129	1.79		
6"	DN150	004110	0.92	004150	3.17				
8"	DN200	004111	2.31						



Materiales disponibles:

- SS316 Codigo HS73072910
- ALU A356 T6 Codigo HS76090000
- MS C85700 Codigo HS74122000
- PP Codigo HS39174000
- Reforzada con 25% hasta 30% de fibra de vidrio



Hembra/BSP/Macho

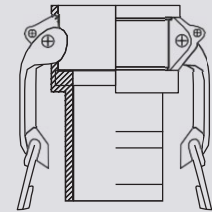
RAKLOKB Acoplamiento con Rosca macho, disponibles en BSPT y NPT

INCH	DN	ALU		SS316		MS		PP	
		Ref.	Peso/Gr.	Ref.	Peso/Gr.	Ref.	Peso/Gr.	Ref.	Peso/Gr.
1/2"	DN13	004200	0.17	004240	0.12	004220	0.07	004212	0.07
1/2"-3/4"	DN 13 x DN19			004239	-			004231	-
3/4"	DN19	004201	0.21	004241	0.21	004221	0.11	004232	0.08
1"	DN25	004202	0.32	004242	0.29	004222	0.16	004233	0.11
1 1/4"	DN32	004203	0.45	004243	0.47	004223	0.27	004213	0.21
1 1/4" - 1 1/2"	DN32 XDN38							004234	-
1 1/2"	DN38	004204	0.52	004244	0.54	004224	0.31	004235	0.21
2"	DN50	004205	0.64	004245	0.67	004225	0.35	004236	0.25
2 1/2"	DN63	004206	0.94	004246	1.14	004226	0.43	004214	
3"	DN75	004207	1.38	004247	1.35	004227	0.68	004237	0.31
4"	DN100	004208	1.94	004248	1.97	004228	0.92	004238	0.76
5"	DN125	004209	3.98	004249	2.98	004229	1.81		
6"	DN150	004210	3.65	004250	4.11	004230	1.78		
8"	DN200	004211	-						



Materiales disponibles:

SS316	Codigo HS73072910
ALU A356T6	Codigo HS76090000
MS C85700	Codigo HS74122000
PP	Codigo HS39174000
Reforzada con 25% hasta 30% de fibra de vidrio	



Hembra para Manguera

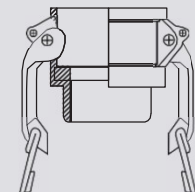
RAKLOK C Acoplamiento para manguera

INCH	DN	ALU		SS316		MS		PP	
		Ref.	Peso/Gr.	Ref.	Peso/Gr.	Ref.	Peso/Gr.	Ref.	Peso/Gr.
1/2"	DN13	004300	0.15	004340	0.13	004320		004312	0.07
1/2"-3/4"	DN 13 x DN19							004331	-
3/4"	DN19	004301	0.23	004341	0.25	004321	0.12	004332	0.08
1"	DN25	004302	0.36	004342	0.37	004322	0.17	004333	0.12
1 1/4"	DN32	004303	0.49	004343	0.59	004323	0.28	004313	0.23
1 1/4" - 1 1/2"	DN32 X DN38							004334	-
1 1/2"	DN38	004304	0.62	004344	0.7	004324	0.34	004335	0.23
2"	DN50	004305	0.77	004345	0.81	004325	0.44	004336	0.31
2 1/2"	DN63	004306	1.07	004346	1.34	004326	0.59		
3"	DN75	004307	1.58	004347	1.97	004327	0.86	004337	0.64
4"	DN100	004308	3.32	004348	3.14	004328	1.25	004338	0.91
5"	DN125	004309	4.13	004349	4.96	004329	1.68		
6"	DN150	004310	6.05	004350	6.58	004330	2.66	004339	
8"	DN200	004311	-	004351					



Materiales disponibles:

SS316	Codigo HS73072910
ALU A356T6	Codigo HS76090000
MS C85700	Codigo HS74122000
PP	Codigo HS39174000
Reforzada con 25% hasta 30% de fibra de vidrio	



Hembra/Hembra

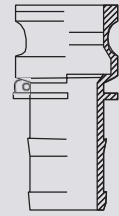
RAKLOK D Acoplamiento con rosca hembra

INCH	DN	ALU		SS316		MS		PP	
		Ref.	Peso/Gr.	Ref.	Peso/Gr.	Ref.	Peso/Gr.	Ref.	Peso/Gr.
1/2"	DN13	004400	0.16	004440	0.13	004420	0.06	004412	0.07
1/2"-3/4"	DN 13 x DN19			004439	-	004419	-	004431	-
3/4"	DN19	004401	0.22	004441	0.23	004421	0.12	004432	0.08
1"	DN25	004402	0.32	004442	0.31	004422	0.16	004433	0.15
1 1/4"	DN32	004403	0.46	004443	0.49	004423	0.28	004413	0.21
1 1/4" - 1 1/2"	DN32 X DN38							004434	-
1 1/2"	DN38	004404	0.54	004444	0.55	004424	0.32	004435	0.23
2"	DN50	004405	0.67	004445	0.71	004425	0.36	004436	0.27
2 1/2"	DN63	004406	0.94	004446	1.01	004426	0.47	004414	0.30
3"	DN75	004407	1.41	004447	1.31	004427	0.73	004437	0.51
4"	DN100	004408	2.09	004448	2.14	004428	1.21	004438	0.75
5"	DN125	004409	2.58	004449	3.54	004429	1.41		
6"	DN150	004410	5.02	004450	4.61	004430	2.16		
8"	DN200	004411	-						



Materiales disponibles:

SS316	Codigo HS73072910
ALU A356T6	Codigo HS76090000
MS C85700	Codigo HS74122000
PP	Codigo HS39174000
Reforzada con 25% hasta 30% de fibra de vidrio	



Macho para Manguera

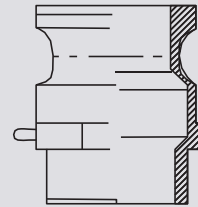
RAKLOK E Adaptador para manguera

INCH	DN	ALU		SS316		MS		PP	
		Ref.	Peso/Gr.	Ref.	Peso/Gr.	Ref.	Peso/Gr.	Ref.	Peso/Gr.
1/2"	DN13	004500	0.11	004540	0.07	004520	0.03	004512	0.01
1/2"-3/4"	DN 13 x DN19							004531	-
3/4"	DN19	004501	0.16	004541	0.14	004521	0.05	004532	0.03
1"	DN25	004502	0.24	004542	0.25	004522	0.09	004533	0.04
1 1/4"	DN32	004503	0.33	004543	0.37	004523	0.12	004513	0.07
1 1/4" - 1 1/2"	DN32 XDN38							004534	-
1 1/2"	DN38	004504	0.44	004544	0.56	004524	0.19	004535	0.09
2"	DN50	004505	0.73	004545	0.85	004525	0.28	004536	0.15
2 1/2"	DN63	004506	0.96	004546	1.17	004526	0.45	004514	
3"	DN75	004507	1.25	004547	1.73	004527	0.66	004537	0.35
4"	DN100	004508	1.91	004548	2.86	004528	1.13	004538	0.65
5"	DN125	004509	4.54	004549	4.05	004529	1.48		
6"	DN150	004510	5.07	004550	5.64	004530	2.21	004539	
8"	DN200	004511	-	004551					



Materiales disponibles:

SS316	Codigo HS73072910
ALU A356T6	Codigo HS76090000
MS C85700	Codigo HS74122000
PP	Codigo HS39174000
Reforzada con 25% hasta 30% de fibra de vidrio	



BSPT Macho/Macho

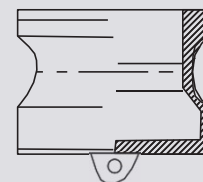
RAKLOK F Acoplamiento con Rosca macho

INCH	DN	ALU		SS316		MS		PP	
		Ref.	Peso/Gr.	Ref.	Peso/Gr.	Ref.	Peso/Gr.	Ref.	Peso/Gr.
1/2"	DN13	004600	0.09	004640	0.09	004620	0.03	004612	0.02
1/2"-3/4"	DN 13 x DN19			004639	-			004631	-
3/4"	DN19	004601	0.15	004641	0.16	004621	0.07	004632	0.03
1"	DN25	004602	0.23	004642	0.26	004622	0.09	004633	0.05
1 1/4"	DN32	004603	0.31	004643	0.4	004623	0.12	004613	0.08
1 1/4" - 1 1/2"	DN32 XDN38							004634	-
1 1/2"	DN38	004604	0.35	004644	0.52	004624	0.18		
2"	DN50	004605	0.51	004645	0.69	004625	0.26		
2 1/2"	DN63	004606	0.8	004646	0.98	004626	0.36	004635	-
3"	DN75	004607	0.94	004647	1.42	004627	0.51	004636	0.21
4"	DN100	004608	1.71	004648	2.52	004628	0.92	004637	0.52
5"	DN125	004609	3.32	004649	3.79	004629	1.34	004638	-
6"	DN150	004610	3.78	004650	5.38	004630	1.44		
8"	DN200	004611	-						



Materiales disponibles:

SS316	Codigo HS73072910
ALU A356T6	Codigo HS76090000
MS C85700	Codigo HS74122000
PP	Codigo HS39174000
Reforzada con 25% hasta 30% de fibra de vidrio	



Macho Tapón

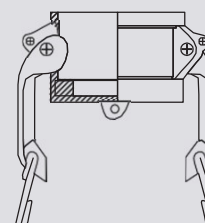
RAKLOK DP macho tapón

INCH	DN	ALU		SS316		MS		PP	
		Ref.	Peso/Gr.	Ref.	Peso/Gr.	Ref.	Peso/Gr.	Ref.	Peso/Gr.
1/2"	DN13	004700	0.07	004740	0.06	004720	0.02	004731	0.01
1/2"-3/4"	DN 13 x DN19								
3/4"	DN19	004701	0.09	004741	0.08	004721	0.03	004732	0.02
1"	DN25	004702	0.13	004742	0.13	004722	0.05	004733	0.02
1 1/4"	DN32	004703	0.21	004743	0.25	004723	0.07	004734	0.04
1 1/4" - 1 1/2"	DN32 X DN38								
1 1/2"	DN38	004704	0.24	004744	0.32	004724	0.12	004735	0.05
2"	DN50	004705	0.41	004745	0.46	004725	0.16	004736	0.08
2 1/2"	DN63	004706	0.59	004746	0.67	004726	0.22		
3"	DN75	004707	0.72	004747	0.93	004727	0.28	004737	0.22
4"	DN100	004708	1.03	004748	1.59	004728	0.51	004738	0.26
5"	DN125	004709	1.61	004749	1.91	004729	0.55		
6"	DN150	004710	1.81	004750	3.84	004730	0.74		
8"	DN200	004711	-						



Materiales disponibles:

SS316	Codigo HS73072910
ALU A356T6	Codigo HS76090000
MS C85700	Codigo HS74122000
PP	Codigo HS39174000
Reforzada con 25% hasta 30% de fibra de vidrio	



Hembra Tapón

RAKLOK DC hembra tapón

INCH	DN	ALU		SS316		MS		PP	
		Ref.	Peso/Gr.	Ref.	Peso/Gr.	Ref.	Peso/Gr.	Ref.	Peso/Gr.
1/2"	DN13	004800	0.12	004840	0.13	004820	0.05	004831	0.02
1/2"-3/4"	DN 13 x DN19								
3/4"	DN19	004801	0.13	004841	0.18	004821	0.11	004832	0.07
1"	DN25	004802	0.27	004842	0.25	004122	0.14	004833	0.11
1 1/4"	DN32	004803	0.41	004843	0.43	004123	0.24	004834	0.21
1 1/4" - 1 1/2"	DN32 X DN38								
1 1/2"	DN38	004804	0.48	004844	0.51	004824	0.27	004835	0.22
2"	DN50	004805	0.61	004845	0.76	004825	0.33	004836	0.31
2 1/2"	DN63	004806	0.77	004846	0.84	004826	0.41	004814	0.24
3"	DN75	004807	1.21	004847	1.01	004827	0.65	004837	0.42
4"	DN100	004808	1.87	004848	1.73	004828	0.92	004838	0.67
5"	DN125	004809	2.11	004849	2.74	004829	1.16		
6"	DN150	004810	3.72	004850	4.28	004730	1.78		
8"	DN200	004811	-						



Materiales disponibles:

SS316

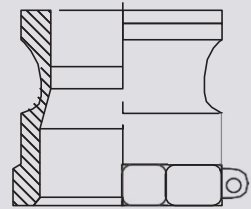
Codigo HS73072910

ALU A356 T6

Codigo HS76090000

MS C85700

Codigo HS74122000



Macho/Hembra

RAKLOK DINA

Adaptador con rosca hembra, disponibles en BSPP con junta teflon en SS316 y PU para ALU yMS

INCH	DN	ALU		SS316		MS		PP	
		Ref.	Peso/Gr.	Ref.	Peso/Gr.	Ref.	Peso/Gr	Ref.	Peso/Gr.
1/2"	DN13	D04100	0.07	D04140	0.07				
3/4"	DN19	D04101	0.11	D04141	0.11	D04121	0.04		
1"	DN25	D04102	0.15	D04142	0.15	D04122	0.05		
1 1/4"	DN32	D04103	0.21	D04143	0.24	D04123	0.09		
1 1/2"	DN38	D04104	0.29	D04144	0.32	D04124	0.11		
2"	DN50	D04105	0.35	D04145	0.42	D04125	0.15		
2 1/2"	DN63	D04106	0.72	D04146	0.71				
3"	DN75	D04107	0.73	D04147	0.73				
4"	DN100	D04108	1.18	D04148	1.42				



Materiales disponibles:

SS316

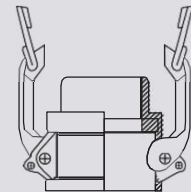
Codigo HS73072910

ALU A356 T6

Codigo HS76090000

MS C85700

Codigo HS74122000



Hembra/Hembra

RAKLOK DIND

Acoplamiento con rosca hembra, disponibles en BSPT con junta teflon en SS316 y PU para ALU yMS

INCH	DN	ALU		SS316		MS		PP	
		Ref.	Peso/Gr.	Ref.	Peso/Gr.	Ref.	Peso/Gr	Ref.	Peso/Gr.
1/2"	DN13	D04400	0.16	D04440	0.13				
3/4"	DN19	D04401	0.22	D04441	0.23	D04421	0.12		
1"	DN25	D04402	0.32	D04442	0.31	D04422	0.16		
1 1/4"	DN32	D04403	0.46	D04443	0.49	D04423	0.28		
1 1/2"	DN38	D04404	0.54	D04444	0.55	D04424	0.32		
2"	DN50	D04405	0.67	D04445	0.71	D04425	0.36		
2 1/2"	DN63	D04406	0.94	D04446	1.01				
3"	DN75	D04407	1.41	D04447	1.31				
4"	DN100	D04408	2.09	D04448	2.14				



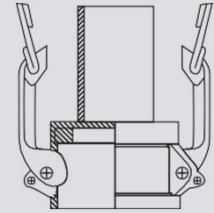
Materiales disponibles:

SS316

Codigo HS73072910

MS C85700

Codigo HS74122000



Hembra para Manguera

RAKLOK DINC Acoplamiento con para manguera , con junta teflon en SS316 y PU para ALU yMS

INCH	DN	ALU		SS316		MS		PP	
		Ref.	Peso/Gr.	Ref.	Peso/Gr.	Ref.	Peso/Gr	Ref.	Peso/Gr.
3/4"	DN19			D04341	0.24				
1"	DN25			D04342	0.35				
1 1/4"	DN32			D04343	0.59				
1 1/2"	DN38			D04344	0.68				
2"	DN50			D04345	0.91	D04325	-		
2 1/2"	DN63			D04346	1.24				
3"	DN75			D04347	1.57				
4"	DN100			D04348	2.59	D04328	-		



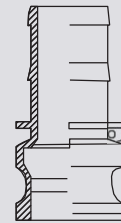
Materiales disponibles:

SS316

Codigo HS73072910

MS C85700

Codigo HS74122000



Macho para Manguera

Reforzada con 25% hasta 30% de fibra de vidrio

RAKLOK DIN E Adaptador para manguera

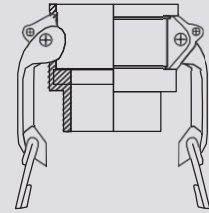
INCH	DN	ALU		SS316		MS		PP	
		Ref.	Peso/Gr.	Ref.	Peso/Gr.	Ref.	Peso/Gr	Ref.	Peso/Gr.
3/4"	DN19			D04541	0.13				
1"	DN25			D04542	0.21				
1 1/4"	DN32			D04543	0.33				
1 1/2"	DN38			D04544	0.45				
2"	DN50			D04545	0.58	D04525	0.66		
2 1/2"	DN63			D04546	0.96				
3"	DN75			D04547	1.16				
4"	DN100			D04548	2.26	D04528	2.69		



Materiales disponibles:

SS316

Codigo HS73072910



Hembra/BSPT/Macho

RAKSAFELOK B

Acoplamiento con Rosca macho, disponibles en BSPT y NPT

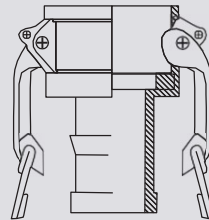
INCH	DN	ALU		SS316		MS		PP	
		Ref.	Peso/Gr.	Ref.	Peso/Gr.	Ref.	Peso/Gr.	Ref.	Peso/Gr.
3/4"	DN19			007201	0.11				
1"	DN25			007202	0.24				
1 1/4"	DN32			007203	0.38				
1 1/2"	DN38			007204	0.42				
2"	DN50			007205	0.61				
2 1/2"	DN63			007206	0.76				
3"	DN75			007207	1.17				
4"	DN100			007208	1.63				



Materiales disponibles:

SS316

Codigo HS73072910



Hembra para manguera

RAKSAFELOK C

Acoplamiento para manguera

INCH	DN	ALU		SS316		MS		PP	
		Ref.	Peso/Gr.	Ref.	Peso/Gr.	Ref.	Peso/Gr.	Ref.	Peso/Gr.
1/2"	DN13	D04400	0.16	D04440	0.13				
3/4"	DN19	D04401	0.22	D04441	0.23	D04421	0.12		
1"	DN25	D04402	0.32	D04442	0.31	D04422	0.16		
1 1/4"	DN32	D04403	0.46	D04443	0.49	D04423	0.28		
1 1/2"	DN38	D04404	0.54	D04444	0.55	D04424	0.32		
2"	DN50	D04405	0.67	D04445	0.71	D04425	0.36		
2 1/2"	DN63	D04406	0.94	D04446	1.01				
3"	DN75	D04407	1.41	D04447	1.31				
4"	DN100	D04408	2.09	D04448	2.14				

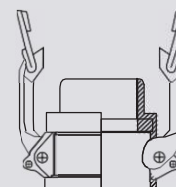


Materiales disponibles:

SS316

Codigo HS73072910

Tambien disponibles con la normativa DIN



Hembra/Hembra BSPS

RAKSAFELOK D Acoplamiento con rosca hembra

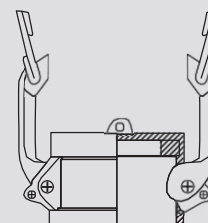
INCH	DN	ALU		SS316		MS		PP	
		Ref.	Peso/Gr.	Ref.	Peso/Gr.	Ref.	Peso/Gr.	Ref.	Peso/Gr.
3/4"	DN19			007401	0.13				
1"	DN25			007402	0.25				
1 1/4"	DN32			007403	0.37				
1 1/2"	DN38			007404	0.45				
2"	DN50			007405	0.65				
2 1/2"	DN63			007406	0.76				
3"	DN75			007407	1.06				
4"	DN100			007408	1.64				



Materiales disponibles:

SS316

Codigo HS73072910



Tapón hembra

RAKSAFELOK DC hembra tapón

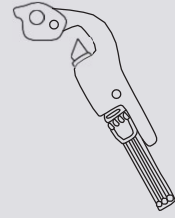
INCH	DN	ALU		SS316		MS		PP	
		Ref.	Peso/Gr.	Ref.	Peso/Gr.	Ref.	Peso/Gr.	Ref.	Peso/Gr.
3/4"	DN19			007801	0.08				
1"	DN25			007802	0.19				
1 1/4"	DN32			007803	0.31				
1 1/2"	DN38			007804	0.36				
2"	DN50			007805	0.49				
2 1/2"	DN63			007806	0.58				
3"	DN75			007807	0.87				
4"	DN100			007808	1.28				



Materiales disponibles:

SS316

Codigo HS73072910



Patas +Anilla

RAKSAFELOK Patas para Raksafelok

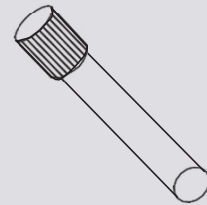
INCH	DN	ALU		SS316		MS		PP	
		Ref.	Peso/Gr.	Ref.	Peso/Gr.	Ref.	Peso/Gr.	Ref.	Peso/Gr.
3/4"	DN19			000389	0.02				
1"	DN25			000390	0.03				
1 1/4"	DN32			000391	0.07				
1 1/2"	DN38								
2"	DN50								
2 1/2"	DN63			000392	0.12				
3"	DN75								
4"	DN100								



Materiales disponibles:

SS316

Codigo HS73072910



Pin

RAKSAFELOK Pin para Raksafelok

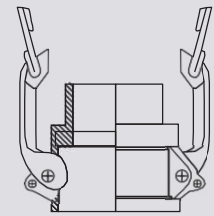
INCH	DN	ALU		SS316		MS		PP	
		Ref.	Peso/Gr.	Ref.	Peso/Gr.	Ref.	Peso/Gr.	Ref.	Peso/Gr.
3/4"	DN19			000385	0.04				
1"	DN25								
1 1/4"	DN32			000386	0.06				
1 1/2"	DN38			000387	0.08				
2"	DN50								
2 1/2"	DN63								
3"	DN75			000388	0.14				
4"	DN100								



Materiales disponibles:

SS316

Codigo HS73072910



Hembra/Espiga para soldar

RAKLOK PARA SOLDAR DW con 30° soldar

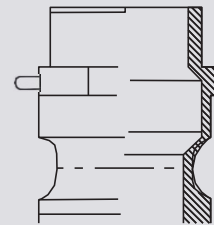
INCH	DN	ALU		SS316		MS		PP	
		Ref.	Peso/Gr.	Ref.	Peso/Gr.	Ref.	Peso/Gr.	Ref.	Peso/Gr.
1/2"	DN13			008006	0.12				
3/4"	DN19			008007	0.21				
1"	DN25			008008	0.29				
1 1/4"	DN32			008009	0.47				
1 1/2"	DN38			008010	0.54				
2"	DN50			008011	0.67				
2 1/2"	DN63			008012	1.14				
3"	DN75			008013	1.35				
4"	DN100			008014	1.97				
5"	DN125			008015	2.98				
6"	DN150			008016	4.11				



Materiales disponibles:

SS316

Codigo HS73072910



Macho/Macho para soldar

RAKLOK PARA SOLDAR DW con 30° soldar

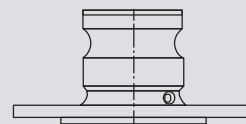
INCH	DN	ALU		SS316		MS		PP	
		Ref.	Peso/Gr.	Ref.	Peso/Gr.	Ref.	Peso/Gr.	Ref.	Peso/Gr.
1/2"	DN13			008018	0.09				
3/4"	DN19			008019	0.16				
1"	DN25			008020	0.26				
1 1/4"	DN32			008021	0.4				
1 1/2"	DN38			008022	0.52				
2"	DN50			008023	0.69				
2 1/2"	DN63			008024	0.98				
3"	DN75			008025	1.42				
4"	DN100			008026	2.52				
5"	DN125			008027	3.79				
6"	DN150			008028	5.38				



Materiales disponibles:

SS316

Codigo HS73072910



Adaptador con brida

RAKLOKFLA Raklok con Adaptador brida

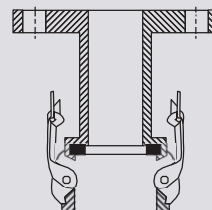
INCH	DN	SS316 PN10/16		SS316 LBS					
		Ref.	Peso/Gr.	Ref.	Peso/Gr.	Ref.	Peso/Gr	Ref.	Peso/Gr.
*	DN20	FA4141		FA4241					
*	DN25	FA4142	2.01	FA4242	2.01				
*	DN40	FA4144	4.1	FA4244	4.1				
*	DN50	FA4145	5.94	FA4245	5.94				
*	DN65	FA4146	7.11	FA4246	7.11				
*	DN80	FA4147	8.19	FA4247	8.19				
*	DN100	FA4148	13.51	FA4248	13.51				
*	DN125	FA4149	-	FA4249	-				
*	DN150	FA4150	22.62	FA4250	22.62				



Materiales disponibles:

SS316

Codigo HS73072910



Acople con brida

RAKLOKFLB Acoplamiento con brida

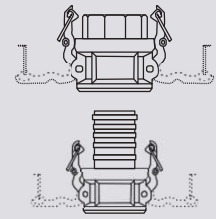
INCH	DN	SS316 PN10/16		SS316 LBS					
		Ref.	Peso/Gr.	Ref.	Peso/Gr.	Ref.	Peso/Gr	Ref.	Peso/Gr.
*	DN20	FB4241	-						
*	DN25	FB4242	3.4						
*	DN40	FB4244	4.1						
*	DN50	FB4245	4.76						
*	DN65	FB4246	-						
*	DN80	FB4247	8.2						
*	DN100	FB4248	15.15						
*	DN125	FB4249	-						
*	DN150	FB4250	26.79						



Materiales disponibles:

ALU A356 T6

Codigo HS76090000



Recuperación de gases

RAKLOK Recuperación de gases

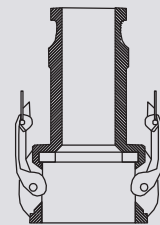
INCH	Tipo	ALU		SS316					
		Ref.	Peso/Gr.	Ref.	Peso/Gr.	Ref.	Peso/Gr.	Ref.	Peso/Gr.
*	D 4" x 3"	004912	0.84						
*	D 3" x 3"	004913	0.75						
*	C 3" x 3"	004914	1.04						
*	C 4" x 4"	004915	1.54						
*	C 4" x 3"	004917	2.23						



Materiales disponibles:

ALU A356 T6

Codigo HS76090000



Reducciones

RAKLOK reducciones

INCH	Tipo	ALU		SS316		MS		PP	
		Ref.	Peso/Gr.	Ref.	Peso/Gr.	Ref.	Peso/Gr.	Ref.	Peso/Gr.
*	C 3" x 2"	004916	1.64						
*									
*	B 3" x 4"	0004919	1.11						
*	F 4" x 3"	0004918	0.78						
*									
*	D 3" x 2"	004910	0.68						
*	D 4" x 3"	004911	0.78						
*									
*	D 4" x A3"	004940	1,51						
*	D 3" x A2"	004922	0,61						



Materiales disponibles:

TEFLON+VITON	Codigo HS40169300
TEFLON+EPDM	Codigo HS40169300
TEFLON+NBR	Codigo HS40169300
EPDM	Codigo HS40169300

RAKLOK Juntas

INCH	DN	TEFLON + VITON		TEFLON + EPDM		TEFLON + NBR		EPDM		VITON GREEN	
		Ref.	Peso/Gr.	Ref.	Peso/Gr.	Ref.	Peso/Gr.	Ref.	Peso/Gr.	Ref.	Peso/Gr.
1/2"	DN13	000466	0.003	000360	0.002	000455	0.002	000444	0.002	GR0411	0.003
3/4"	DN19	000467	0.006	000361	0.005	000456	0.005	000445	0.004	GR0412	0.006
1"	DN25	000468	0.008	000362	0.007	000457	0.006	000435	0.005	GR0413	0.008
1 1/4"	DN32	000469	0.011	000363	0.009	000458	0.008	000436	0.007	GR0414	0.011
1 1/2"	DN38	000470	0.014	000364	0.011	000459	0.11	000437	0.009	GR0415	0.014
2"	DN50	000471	0.016	000365	0.013	000460	0.13	000438	0.012	GR0416	0.017
2 1/2"	DN63	000472	0.024	000366	0.021	000461	0.021	000439	0.018	GR0417	0.025
3"	DN75	000473	0.029	000367	0.023	000462	0.023	000440	0.021	GR0418	0.031
4"	DN100	000474	0.043	000368	0.034	000463	0.034	000441	0.032	GR0419	0.045
5"	DN125	000475	-	000369	-	000464	-	000442	0.039	GR0420	0.064
6"	DN150	000476	-	000370	-	000465	-	000443	0.044	GR0421	0.084



Materiales disponibles:

CRS - FEP/SILICONA	Codigo HS40169300
CRW - FEP/SILICONA	Codigo HS40169300
CVB - FEP/SILICONA	Codigo HS40169300

Juntas Encapsuladas

RAKFEP Juntas

INCH	DN	CSR- FEP/SILICONA		CSW - FEP/SILICONA		CVB - FEP/SILICONA		Ref.	Peso/Gr.
		Ref.	Peso/Gr.	Ref.	Peso/Gr.	Ref.	Peso/Gr.		
1/2"	DN13	000100	0,003	000111	0,003	000122	0,006		
3/4"	DN19	000101	0,006	000112	0,006	000123	0,012		
1"	DN25	000102	0,07	000113	0,07	000124	0,14		
1 1/4"	DN32	000103	0,09	000114	0,09	000125	0,18		
1 1/2"	DN38	000104	0,11	000115	0,11	000126	0,22		
2"	DN50	000105	0,13	000116	0,13	000127	0,26		
2 1/2"	DN63	000106	0,21	000117	0,21	000128	0,42		
3"	DN75	000107	0,23	000118	0,23	000129	0,46		
4"	DN100	000108	0,34	000119	0,34	000130	0,68		
5"	DN125	000109	-	000120	-	000131	-		
6"	DN150	000110	-	000121	-	000132	-		



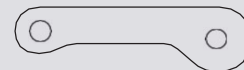
Materiales disponibles:

SS316

Codigo HS73072910

MS C85700

Codigo HS74122000



Patas

RAKLOK Patas

INCH	DN	SS316		MS					
		Ref.	Peso/Gr.	Ref.	Peso/Gr.	Ref.	Peso/Gr	Ref.	Peso/Gr.
1/2"	DN13	000477	0.18						
3/4"	DN19								
1"	DN25	000479	0.28	000487	0.16				
1 1/4"	DN32	000480	0.67	000488	0.58				
1 1/2"	DN38								
2"	DN50								
2 1/2"	DN63								
3"	DN75	000482	1.25	000490	0.66				
4"	DN100								
5"	DN125								
6"	DN150	000483	-						
8"	DN200								



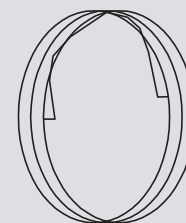
Materiales disponibles:

SS316

Codigo HS73072910

ST

Codigo HS73071990



Anilla

RAKLOK Anilla

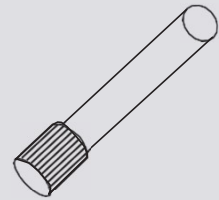
INCH	DN	SS316		ST					
		Ref.	Peso/Gr.	Ref.	Peso/Gr.	Ref.	Peso/Gr	Ref.	Peso/Gr.
1/2"	DN13	000493	0.03	000491					
3/4"	DN19								
1"	DN25	000494	0.04						
1 1/4"	DN32	000496	0.07						
1 1/2"	DN38								
2"	DN50								
2 1/2"	DN63								
3"	DN75	000498	0.08						
4"	DN100								
5"	DN125								
6"	DN150	000499	0.09						
8"	DN200								



Materiales disponibles:

SS316

73072910



Pin

RAKLOK Pin

INCH	DN	ALU		SS316		MS		PP	
		Ref.	Peso/Gr.	Ref.	Peso/Gr.	Ref.	Peso/Gr.	Ref.	Peso/Gr.
1/2"	DN13								
3/4"	DN19								
1"	DN25			000501	0.04				
1 1/4"	DN32			000503	0.06				
1 1/2"	DN38								
2"	DN50			000504	0.08				
2 1/2"	DN63								
3"	DN75								
4"	DN100			000507	0.14				
5"	DN125								
6"	DN150			000508	0.16				



Materiales disponibles:

SS316

Codigo HS73072910

ST

Codigo HS73071990



Pasador de seguridad

RAKLOK Pasador de seguridad

INCH	DN	SS316		ST		Ref.	Peso/Gr.	Ref.	Peso/Gr.
		Ref.	Peso/Gr.	Ref.	Peso/Gr.				
1/2"	DN13								
3/4"	DN19	000394	0.06	000396	0.06				
1"	DN25								
1 1/4"	DN32								
1 1/2"	DN38								
2"	DN50								
2 1/2"	DN63								
3"	DN75	000395	0.08	000397	0.08				
4"	DN100								
5"	DN125								
6"	DN150								



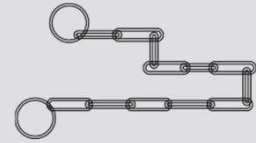
Materiales disponibles:

SS316

Codigo HS73072910

ST

Codigo HS73071990



Cadena

RAKLOK 30cm cadena

INCH	DN	SS316		ST							
		Ref.	Peso/Gr.	Ref.	Peso/Gr.	Ref.	Peso/Gr.	Ref.	Peso/Gr.	Ref.	Peso/Gr.
1/2"	DN13	000349	0.12	000350	0.12						
3/4"	DN19										
1"	DN25										
1 1/4"	DN32										
1 1/2"	DN38										
2"	DN50										
2 1/2"	DN63										
3"	DN75										
4"	DN100										
5"	DN125										
6"	DN150										



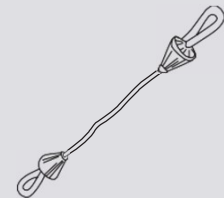
Materiales disponibles:

SS316

Codigo HS73072910

ST

Codigo HS73071990



Cable de Seguridad

RAKLOK Cable de Seguridad

INCH	DN	SS316		ST					
		Ref.	Peso/Gr.	Ref.	Peso/Gr.	Ref.	Peso/Gr.	Ref.	Peso/Gr.
1/2"	DN13	000215	0.25	000217	0.21				
3/4"	DN19								
1"	DN25								
1 1/4"	DN32								
1 1/2"	DN38	000216	1.24	000218	1.06				
2"	DN50								
2 1/2"	DN63								
3"	DN75								