

05-EXPRESS



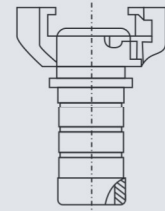
Materials available:

SS316

HS code 73072910

MS C87500

HS code 74122000



For Hose

EXPRESS DIN for Hose

DN	INCH	SS316		MS					
		Ref.	Weight/Gr.	Ref.	Weight/Gr.	Ref.	Weight/Gr.	Ref.	Weight/Gr.
DN 6	1/4"			001105	-				
DN 10	3/8"			001106	0,07				
DN 12	1/2"	001500	0,085	001107	0,07				
DN 16	5/8"			001108	0,08				
DN 19	3/4"	001501	0,093	001109	0,08				
DN 25	1"	001502	0,100	001110	0,10				
DN 32	1 1/4"	001503	0,130	001111	0,14				
DN 40	1 1/2"			001112	0,18				



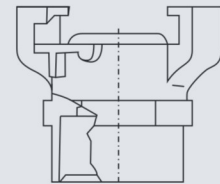
Materials available:

SS316

HS code 73072910

MS C87500

HS code 74122000



Female

EXPRESS DIN Female

DN	INCH	SS316		MS					
		Ref.	Weight/Gr.	Ref.	Weight/Gr.	Ref.	Weight/Gr.	Ref.	Weight/Gr.
DN 6	1/4"			001113	-				
DN 10	3/8"			001114	0,07				
DN 12	1/2"	001510	0,085	001115	0,07				
DN 16	5/8"								
DN 19	3/4"	001511	0,095	001116	0,08				
DN 25	1"	001512	0,100	001117	0,08				
DN 32	1 1/4"	001513	0,134	001118	0,11				
DN 40	1 1/2"			001119	0,13				



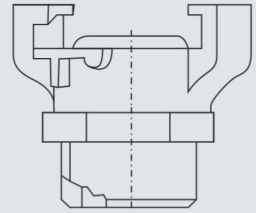
Materials available:

SS316

HS Code 73072910

MS C87500

HS code 74122000



Male

EXPRESS DIN Male

DN	INCH	SS316		MS					
		Ref.	Weight/Gr.	Ref.	Weight/Gr.	Ref.	Weight/Gr.	Ref.	Weight/Gr.
DN 6	1/4"			001120	-				
DN 10	3/8"			001121	0,07				
DN 12	1/2"	001520	0,085	001122	0,07				
DN 16	5/8"								
DN 19	3/4"	001521	0,093	001123	0,07				
DN 25	1"	001522	0,100	001124	0,08				
DN 32	1 1/4"	001523	0,126	001125	0,10				
DN 40	1 1/2"			001126	0,14				



Materials available:

SS316

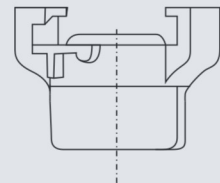
HS code 73072910

MS

HS code 74122000

NBR

HS code 40169300



Dustcap / Gasket

EXPRESS DIN Dustcap / Gasket

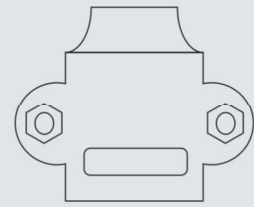
DN	INCH	SS316		MS					
		Ref.	Weight/Gr.	Ref.	Weight/Gr.	Ref.	Weight/Gr.	Ref.	Weight/Gr.
UNIVERSAL CAP		001533	0,84	001127	0,72				
		NBR							
UNIVERSAL		001128	0,04						



Materials available:

ZPL

HS code 73071990



Claw Clamps

EXPRESS DIN Claw Clamps

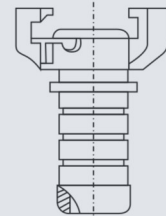
TYPE	Ext.Ø	ZPL		Ref.	Weight/Gr.	Ref.	Weight/Gr.	Ref.	Weight/Gr.
		Ref.	Weight/Gr.						
18	16-18	001129	-						
20	19-21	001130	0,04						
23	22-24	001131	0,04						
26	25-27	001132	0,06						
29	28-30	001133	0,06						
32	31-33	001134	0,08						
36	34-36	001135	0,13						
38	37-39	001136	0,15						



Materials available:

MS C87500

HS code 74122000



For Hose

FRENCH EXPRESS for Hose

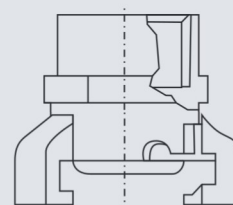
INCH	Hose Ø	MS		Ref.	Weight/Gr.	Ref.	Weight/Gr.	Ref.	Weight/Gr.
		Ref.	Weight/Gr.						
1/4"	6-8 mm	001068	-						
1/4"	8-10 mm	001069	-						
3/8"	9-11 mm	001070	0,102						
3/8"	11-13 mm	001071	-						
1/2"	13-15 mm	001072	0,103						
1/2"	16-18 mm	001073	-						
3/4"	19-21 mm	001074	0,293						
1"	22-24 mm	001075	0,136						
1 1/4"	25-27 mm	001076	0,151						



Materials available:

MS C87500

HS code 74122000



Female

FRENCH EXPRESS Female

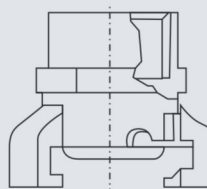
DN	INCH	MS		Ref.	Weight/Gr.	Ref.	Weight/Gr.	Ref.	Weight/Gr.
		Ref.	Weight/Gr.						
DN 6	1/4"	001078	0,097						
DN 10	3/8"	001079	0,097						
DN 12	1/2"	001080	0,102						
DN 16	5/8"	001081	-						
DN 19	3/4"	001082	0,110						
DN 25	1"	001083	0,105						
DN 32	1 1/4"	001084	0,159						
DN 40	1 1/2"	001085	-						



Materials available:

MS C87500

HS code 74122000



Male

FRENCH EXPRESS Male

DN	INCH	MS		Ref.	Weight/Gr.	Ref.	Weight/Gr.	Ref.	Weight/Gr.
		Ref.	Weight/Gr.						
DN 6	1/4"	001086	0,094						
DN 10	3/8"	001087	0,107						
DN 12	1/2"	001088	0,097						
DN 16	5/8"	001089	-						
DN 19	3/4"	001090	0,104						
DN 25	1"	001091	0,119						
DN 32	1 1/4"	001092	0,183						
DN 40	1 1/2"	001093	-						



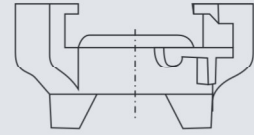
Materials available:

MS C87500

HS code 74122000

NBR

HS code 40169300



Dustcap / Gasket

FRENCH EXPRESS Dustcap / Gasket

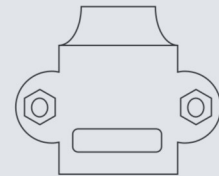
DN	INCH	MS		Ref.	Weight/Gr.	Ref.	Weight/Gr.	Ref.	Weight/Gr.
		Ref.	Weight/Gr.						
UNIVERSAL CAP		0001094	0,098						
		NBR							
UNIVERSAL GASKET		001095	0,04						



Materials available:

ZPL

HS code 73071990



Claw Clamps

FRENCH EXPRESS Claw Clamps

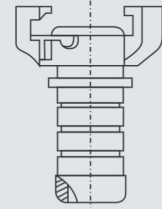
TYPE	Ext.Ø	ZPL		Ref.	Weight/Gr.	Ref.	Weight/Gr.	Ref.	Weight/Gr.
		Ref.	Weight/Gr.						
18	16-18	001129	-						
20	19-21	001130	0,04						
23	22-24	001131	0,04						
26	25-27	001132	0,06						
29	28-30	001133	0,06						
32	31-33	001134	0,08						
36	34-36	001135	0,13						
38	37-39	001136	0,15						



Materials available:

SS316
CST

HS code 73072910
HS code 73071990



For Hose with Safety Collar

EXPRESS EU AIR for Hose with Safety Collar

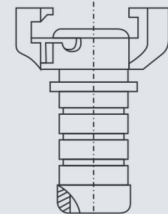
DN	INCH	SS316		MS		Ref.	Weight/Gr.	Ref.	Weight/Gr.
		Ref.	Weight/Gr.	Ref.	Weight/Gr.				
DN 6	3/8"	001220SS	-	001196	0,183				
DN 10	1/2"	001221SS	0,151	001197	0,180				
DN 12	3/4"	001222SS	0,168	001198	0,200				
DN 16	1"	001223SS	0,175	001199	0,230				
DN 19	1 1/4"	001224SS	-						



Materials available:

CST

HS code 73071990



For Hose

EXPRESS EU AIR for Hose

DN	INCH	CST		Ref.	Weight/Gr.	Ref.	Weight/Gr.	Ref.	Weight/Gr.
		Ref.	Weight/Gr.						
DN 6	3/8"	001200	0,159						
DN 10	1/2"	001201	0,149						
DN 12	3/4"	001202	0,163						
DN 16	1"	001203	0,194						
DN 19	1 1/4"	001204	0,214						



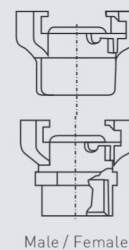
Materials available:

SS316

HS code 73072910

CST

HS code 73071990



Male / Female

EXPRESS EU AIR Male / Female

DN	INCH	CST		SS316		Ref.	Weight/Gr.	Ref.	Weight/Gr.
		Ref.	Weight/Gr.	Ref.	Weight/Gr.				
Male									
DN 6	3/8"	001205	0,165	1225SS	-				
DN 10	1/2"	001206	0,173	1226SS	0,133				
DN 12	3/4"	001207	0,170	1227SS	0,143				
DN 16	1"	001208	0,220	1228SS	0,200				
Female									
DN 6	3/8"	001209	0,131	1229SS	-				
DN 10	1/2"	001210	0,150	1230SS	0,139				
DN 12	3/4"	001211	0,138	1231SS	0,142				
DN 16	1"	001212	0,165	1232SS	0,201				



Materials available:

ZPL

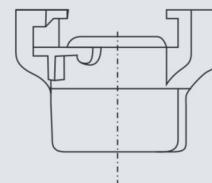
HS code 73071990

NBR

HS code 40169300

SS316

HS code 73072910



Dustcap / Gasket

EXPRESS EU AIR Dustcap / Gasket

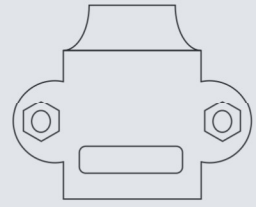
DN	INCH	MS		SS316		Ref.	Weight/Gr.	Ref.	Weight/Gr.
		Ref.	Weight/Gr.	Ref.	Weight/Gr.				
UNIVERSAL CAP		001213	0,150	001233SS	0,131				
NBR									
UNIVERSAL GASKET		001234	0,006						



Materials available:

ZPL

HS code 73071990



Claw Clamps

EXPRESS EU AIR Claw Clamps

TYPE	Ext.Ø	ZPL							
		Ref.	Weight/Gr.	Ref.	Weight/Gr.	Ref.	Weight/Gr.	Ref.	Weight/Gr.
18	16-18	001129	-						
20	19-21	001130	0,04						
23	22-24	001131	0,04						
26	25-27	001132	0,06						
29	28-30	001133	0,06						
32	31-33	001134	0,08						
36	34-36	001135	0,13						
38	37-39	001136	0,15						