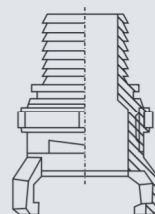


# 03-GUILLEMIN



#### Materials available:

SS316	HS code 73072910
ALU A356 T6	HS code 76090000
MS C85700	HS code 74122000
PP	HS code 39174000
reinforced with 25% to 30% fiberglass	



With Hosetail

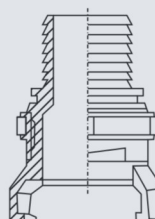
### GUILLEMIN with Hosetail

TYPE	Hosetail mm	ALU		SS316		PP		MS	
		Ref.	Weight/Gr.	Ref.	Weight/Gr.	Ref.	Weight	Ref.	Weight/Gr.
DN20	25	006001	0.78	006041	0.076				
DN25	30	006002	0.121	006042	0.124				
DN32	35	006003	-	006043	-				
DN40	40	006004	0.171	006044	0.383	006064	0.13	006024	
DN40	45	006005	0.251	006045	0.316	006065	0.15		
DN50	50	006006	0.331	006046	0.93	006066	0.17	006025	
DN50	55	006007	0.381	006047	0.87	006067	0.21		
DN65	65	006008	0.411					006026	
DN65	70	006009	0.601	006049	1.05				
DN80	76	006011	0.771	006051	2.27	006071	0.42	006031	
DN80	80	006012	0.791	006052	2.28	006072	-	006032	
DN80	85	006013	-	006053	-				
DN80	90	006014	0.851	006054	2.4	006074	0.48	006034	
DN100	100	006015	1.33	006055	3.31			006035	
DN100	102	006010	1.51						
DN100	105	006018	1.31						
DN100	110	006016	1.26	006056	2.24				
DN150	152	006017	-	006057	5.3				



#### Materials available:

SS316	HS code 73072910
ALU A356 T6	HS code 76090000



For Composite Hose

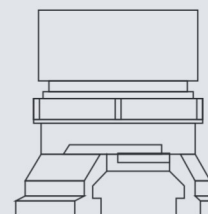
### GUILLEMIN with Hosetail for Composite Hose

TYPE	ALU		SS316		SS304		Ref.	Weight/Gr.	Ref.
	Ref.	Weight/Gr.	Ref.	Weight/Gr.	Ref.	Weight			
DN20			006121						
DN25			006122	0.268					
DN32			006123	0.291					
DN40			006124	0.465	006124-04	-			
DN50	006115	-	006125	0.817	006125-04	-			
DN65	006116	0.622	006126	1.111	006126-04	-			
DN80	006117	0.931	006127	1.986	006127-04	-			
DN100	006118	1.416	006128	3.291	006128-04	-			



#### Materials available:

SS316	HS code 73072910
ALU A356 T6	HS code 76090000
MS C85700	HS code 74122000
PP	HS code 39174000
reinforced with 25% to 30% fiberglass	



Female with Latch

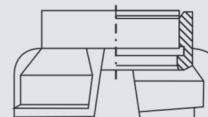
### GUILLEMIN Female Thread with Latch

TYPE	ALU		SS316		PP		MS	
	Ref.	Weight/Gr.	Ref.	Weight/Gr.	Ref.	Weight/Gr.	Ref.	Weight/Gr.
DN20	006201							
DN25	006202		006242					
DN32	006203		006243					
DN40	006204	0.41	006244	0.6	006234	0.14	006224	
DN50	006205	0.45	006245	0.78	006235	0.16	006225	
DN65	006206	0.47	006246	1.24			006226	
DN80 2 1/2"	006211	0,54						
DN80	006207	0.65	006247	1.65	006237	0.46	006227	
DN100	006208	1.05	006248	3.07	006238	-	006228	
DN150	006210	3.15						



#### Materials available:

SS316	HS code 73072910
ALU A380	HS code 76090000
MS	HS code 74122000



Female without Latch

### GUILLEMIN Female Thread without Latch

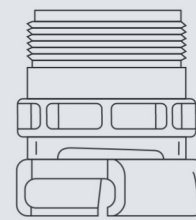
TYPE	ALU		SS316				MS	
	Ref.	Weight/Gr.	Ref.	Weight/Gr.	Ref.	Weight/Gr.	Ref.	Weight/Gr.
DN20	006401	0.02	006441	0.07				
DN25	006402	0.03	006442	0.08				
DN32	006403	0.09	006443	0.12				
DN40	006404	0.14	006444	0.38			006424	
DN50	006405	0.23	006445	0.41			006425	
DN65	006406	0.35	006446	0.45			006426	
DN80	006407	0.41	006447	0.75			006427	
DN 2 1/2"	006212	-						
DN100	006408	0.42	006448	0.89			006428	
DN150	6410	-						



#### Materials available:

SS316	HS code 73072910
ALU A356 T6	HS code 76090000
MS C85700	HS code 74122000
PP	HS code 39174000

reinforced with 25% to 30% fiberglass



Male thread with Latch

### GUILLEMIN Male Thread with Latch

TYPE	ALU		SS316		PP		MS	
	Ref.	Weight/Gr.	Ref.	Weight/Gr.	Ref.	Weight/Gr.		
DN20	006301	0.06						
DN25	006302	0.07	006342					
DN32	006303	0.08	006343					
DN40	006304	0.16	006344	0.41	006334	0.14	006324	
DN50	006305	0.31	006345	0.65	006335	0.16	006325	
DN65	006306	0.47	006346	0.91	006339		006326	
DN80	006307	0.61	006347	1.37	006337	0.46	006327	
DN100	006308	0.87	006348	2.38	006338	-	006328	
DN150	006310	3.15						



#### Materials available:

SS316	HS code 73072910
ALU A356 T6	HS code 76090000
MS C85700	HS code 74122000



Male without Latch

### GUILLEMIN Male Thread without Latch

TYPE	ALU		SS316				MS	
	Ref.	Weight/Gr.	Ref.	Weight/Gr.			Ref.	Weight/Gr.
DN20	006501	0.03						
DN25	006502	0.04						
DN32	006503	0.08						
DN40	006504	0.12	006544	0.26			006524	
DN50	006505	0.15	006545	0.46			006525	
DN65	006506	0.23	006546	0.64			006526	
DN80	006507	0.46	006547	0.96			006527	
DN100	006508	0.64	006548	1.89			006528	
DN150			006549					





#### Materials available:

SS316

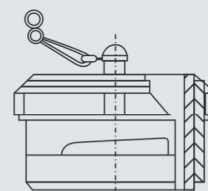
HS code 73072910

ALU A356 T6

HS code 76090000

MS C85700

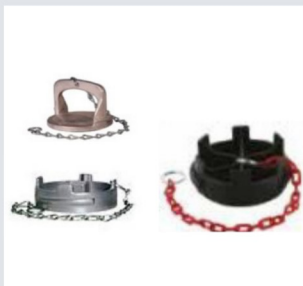
HS code 74122000



Dustcap with Latch

### GUILLEMIN Dustcap with Latch

TYPE	ALU		SS316		MS		SS316 BLIND	
	Ref.	Weight/Gr.	Ref.	Weight/Gr.	Ref.	Weight/Gr.	Ref.	Weight/Gr.
DN15			006640				006651	
DN20	006601	-	006641				006652	
DN25	006602	-	006642				006653	
DN32	006603	-	006643				006654	
DN40	006604	0.07	006644	0.29	006624		006655	
DN50	006605	0.24	006645	0.6	006625		006656	
DN65	006606	0.31	006646	0.76	006626		006657	
DN80	006607	0.46	006647	1.26	006627		006658	
DN100	006608	0.71	006648	1.68	006628		006659	
DN150	006610	-	006649	-			006660	



#### Materials available:

SS316

HS code 73072910

ALU A356 T6

HS code 76090000

PP

HS code 39174000

reinforced with 25% to 30% fiberglass



Dustcap without Latch

### GUILLEMIN Dustcap without Latch

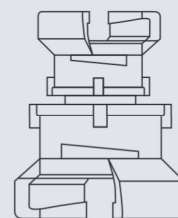
TYPE	ALU		SS316		PP		Ref.	Weight/Gr.
	Ref.	Weight/Gr.	Ref.	Weight/Gr.	Ref.	Weight/Gr.		
DN40					006634	0.05		
DN50	006705		006745	0.23	006635	0.08		
DN65								
DN80	006707		006747	0.43	006637	0.13		
DN100	006708	0.41			006638	0.18		
	Dustcap with handle							
DN50	P06705	0.11						
DN80	P06707	0.16						
DN100	P06708	0.16						



#### Materials available:

SS316	HS code 73072910
ALU A356 T6	HS code 76090000
MS C85700	HS code 74122000
PP	HS code 39417400

reinforced with 25% to 30% fiberglass



Reductions

## GUILLEMIN Reduction

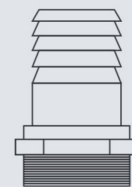
TYPE	ALU		SS316		PP		MS	
	Ref.	Weight/Gr.	Ref.	Weight/Gr.	Ref.	Weight/Gr.	Ref.	Weight/Gr.
40 x 50	006904	0.42	006945					
40 x 65	006905	0.58	006944	1.66				
40 x 80	006906	0.87						
50 x 65	006902	0.66	006942	2.13				
50 x 80	006900	0.96	006940	2.05	006930	-		
65 x 80	006903	0.89	006943	3.11				
40 x 100	006907	1.13						
50 x 100	006908	1.07						
65 x 100	006909	1.23						
80 x 100	006901	1.32	006941	4.91	006931	-	006927	-



#### Materials available:

SS316	HS code 73072910
ALU A356 T6	HS code 76090000
MS C85700	HS code 74122000
PP	HS code 394174000

reinforced with 25% to 30% fiberglass



Male Thread for CX Hose

### GUILLEMIN Male Thread for Composite Hose

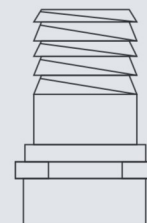
TYPE	INCH	ALU		SS316		SS304		MS		PP	
		Ref.	Weight/Gr.	Ref.	Weight/Gr.	Ref.	Weight/Gr.	Ref.	Weight/Gr.	Ref.	Weight/Gr.
DN25	1"	006812	0.93	006852	0.24	006842	0.24			6832	
DN32	1 1/4"			006853	0.35					6833	
DN40	1 1/2"	006814	1.93	006854	0.61	006844	0.61	006134	-	6834	-
DN50	2"	006815	2.88	006855	0.85	006845	0.85	006135	-	6835	-
DN65	2 1/2"	006816	4.05	006856	-	006846	1.23	006136	-	6836	-
DN80	3"	006817	6.36	006857	1.92	006847	1.92	006137	-	6837	-
DN100	4"	006818	13.01	006858	3.01	006848	3.01	006138	-	6838	-



#### Materials available:

SS316	HS code 73072910
PP	HS code 39417400

reinforced with 25% to 30% fiberglass



Female Thread for CX Hose

### GUILLEMIN Female Thread for Composite Hose

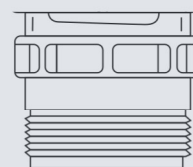
TYPE	INCH	SS316		PP					
		Ref.	Weight/Gr.	Ref.	Weight/Gr.	Ref.	Weight/Gr.	Ref.	Weight/Gr.
DN25	1"	006852GI	-	006822	-				
DN32	1 1/4"			006823	-				
DN40	1 1/2"	006854GI	-	006824	-				
DN50	2"	006855GI	-	006825	-				
DN65	2 1/2"	006856GI	-	006826	-				
DN80	3"	006857GI	-	006827	-				
DN100	4"	006858GI	-	006828	-				



Materials available:

ALU A356 T6

HS code 76090000



Male Without Ears

## GUILLEMIN Male Without Ears With Latch

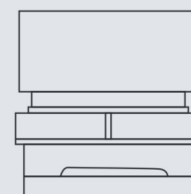
TYPE	INCH	ALU							
		Ref.	Weight/Gr.	Ref.	Weight/Gr.	Ref.	Weight/Gr.	Ref.	Weight/Gr.
DN25	1"								
DN32	1 1/4"								
DN40	1 1/2"	6394	-						
DN50	2"	6395	-						
DN65	2 1/2"	6396	-						
DN80	3"	6397	-						
DN100	4"	6398	-						



Materials available:

ALU A356 T6

HS code 76090000



Female Without Ears

## GUILLEMIN Female Without Ears With Latch

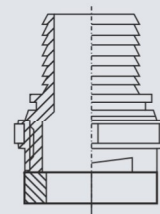
TYPE	INCH	ALU							
		Ref.	Weight/Gr.	Ref.	Weight/Gr.	Ref.	Weight/Gr.	Ref.	Weight/Gr.
DN25	1"								
DN32	1 1/4"								
DN40	1 1/2"	6294	-						
DN50	2"	6295	-						
DN65	2 1/2"	6295	-						
DN80	3"	6297	-						
DN100	4"	6298	-						



Materials available:

ALU A356 T6

HS code 76090000



For Hose Without Ears

## GUILLEMIN for Hose Without Ears With Latch

TYPE	INCH	ALU							
		Ref.	Weight/Gr.	Ref.	Weight/Gr.	Ref.	Weight/Gr.	Ref.	Weight/Gr.
DN25	1"								
DN32	1 1/4"								
DN40	1 1/2"								
DN50	2"	6095							
DN65	2 1/2"								
DN76	3"	6097							
DN90	3"	6098							
DN102	4"	6099							
DN110	4"	6100							



Materials available:

SS316

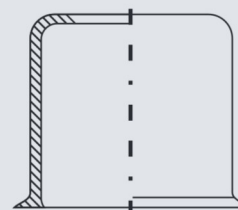
HS code 73072910

ALU A356 T6

HS code 76090000

ST

HS code 73071990



Ferrules for CX Hose

## GUILLEMIN Ferrules for Composite Hose

DN		ALU		SS316		ST			
		Ref.	Weight/Gr.	Ref.	Weight/Gr.	Ref.	Weight/Gr.	Ref.	Weight/Gr.
DN25		000202	0.43	000242	0.88	000262	0.88		
DN32		000203	0.52	000243	0.97	000263	0.97		
DN40	57 x 46 x 45	000204	0.65	000244	1.26	000264	1.26		
DN50	67 x 55 x 63	000205	0.76	000245	2.01	000265	2.1		
DN65	85 x 66 x 73	000206	0.86			000266	2.03		
DN65	83 x 68 x 73			000246	2.05				
DN75						000267	2.75		
DN75	98,5 x 85 x 76	000207	1.61						
DN75	98,5 x 86 x 85			000247	3.11				
DN100	122 x 107 x 87	000208	2.01	000248	4.21	000268	3.98		
DN150	184 x 155 x 140	000210	-						



#### Materials available:

NBR

HS code 40169300

VITON

HS code 40169300

Ferrule Gasket Composite

### GUILLEMIN Gasket for Composite Ferrule

DN	INCH	NBR		VITON					
		Ref.	Weight/Gr.	Ref.	Weight/Gr.	Ref.	Weight/Gr.	Ref.	Weight/Gr.
DN25	1"	000372	0.11	000519					
DN32	1 1/4"	000373	0.12	000520					
DN40	1 1/2"	000374	0.14	000521					
DN50	2"	000375	0.23	000522					
DN65	2 1/2"	000376	0.32	000523					
DN80	3"	000377	0.44	000524					
DN100	4"	000378	0.68	000525					



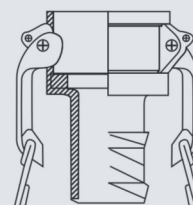
#### Materials available:

SS316

HS code 73072910

ALU A356 T6

HS code 76090000



Female for CX Hose

### GUILLEMIN Raklok type C with double spiral for hose

TYPE	INCH	ALU		SS316					
		Ref.	Weight/Gr.	Ref.	Weight/Gr.	Ref.	Weight/Gr.	Ref.	Weight/Gr.
DN25	1"	S04302	-	S04342	-				
DN32	1 1/4"	S04303	-	S04343	-				
DN40	1 1/2"	S04304	-	S04344	-				
DN50	2"	S04305	-	S04345	-				
DN65	2 1/2"	S04306	-	S04346	-				
DN75	3"	S04307	-	S04347	-				
DN100	4"	S04308	-	S04348	-				



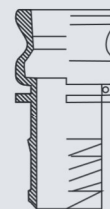
#### Materials available:

SS316

HS code 73072910

ALU A356 T6

HS code 76090000



Male for CX Hose

### **GUILLEMIN** Guillemmin Raklok type E with double spiral for hose

TYPE	INCH	ALU		SS316					
		Ref.	Weight/Gr.	Ref.	Weight/Gr.	Ref.	Weight/Gr.	Ref.	Weight/Gr.
DN25	1"	S04502	-	S04542	-				
DN32	1 1/4"	S04503	-	S04543	-				
DN40	1 1/2"	S04504	-	S04544	-				
DN50	2"	S04505	-	S04545	-				
DN65	2 1/2"	S04506	-	S04546	-				
DN75	3"	S04507	-	S04547	-				
DN100	4"	S04508	-	S04548	-				



#### Materials available:

SS316

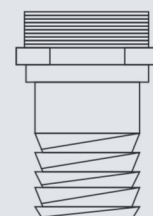
HS code 73072910

ALU A356 T6

HS code 76090000

PP

HS code 39174000



Male Thread for CX Hose

### **GUILLEMIN** Male Thread for Composite Hose with Double Spiral

DN	INCH	ALU		SS316		PP			
		Ref.	Weight/Gr.	Ref.	Weight/Gr.	Ref.	Weight/Gr.	Ref.	Weight/Gr.
DN19	3/4"	S06811	-	S06851	-	S06831	-		
DN25	1"	S06812	-	S06852	-	S06832	-		
DN32	1 1/4"	S06813	-	S06853	-	S06833	-		
DN40	1 1/2"	S06814	-	S06854	-	S06834	-		
DN50	2"	S06815	-	S06855	-	S06835	-		
DN65	2 1/2"	S06816	-	S06856	-	S06836	-		
DN75	3"	S06819	-	S06859	-	S06839	-		
DN80	3"	S06817	-	S06857	-	S06837	-		
DN100	4"	S06818	-	S06858	-	S06838	-		





#### Materials available:

SS316

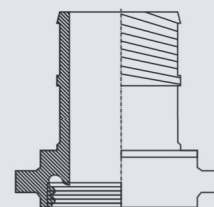
HS code 73072910

ALU A356 T6

HS code 76090000

MS C85700

HS code 74122000



Dustcap with Latch

### GUILLEMIN Female for Composite Hose with Double Spiral

DN	INCH	ALU		SS316		MS			
		Ref.	Weight/Gr.	Ref.	Weight/Gr.	Ref.	Weight/Gr.	Ref.	Weight/Gr.
DN25	1"	S06802	-	S06882	-	S06822	-		
DN32	1 1/4"	S06803	-	S06883	-	S06823	-		
DN40	1 1/2"	S06804	-	S06884	-	S06824	-		
DN50	2"	S06805	-	S06885	-	S06825	-		
DN65	2 1/2"	S06806	-	S06886	-	S06826	-		
DN75	3"	S06807	-	S06887	-	S06827	-		
DN100	4"	S06808	-	S06888	-	S06828	-		



#### Materials available:

NBR

HS code 40169300

VITON

HS code 40169300

EDPM

HS code 40169300

TEFLON

HS code 39269097

Flat Seals

### GUILLEMIN Flat Seal Gasket

TYPE	INCH	EPDM WHITE		NBR BLACK		NBR WHITE		VITON		TEFLON	
		Ref.	Weight/Gr.	Ref.	Weight/Gr.	Ref.	Weight/Gr.	Ref.	Weight/Gr.	Ref.	Weight/Gr.
DN25	1"	000276	-			000284	0.003	000312	0.01		
DN32	1 1/4"	000277	-	000303	0.02						
DN40	1 1/2"	000278	0.05	000304	0.04	000285	0.003	000314	0.06		
DN50	2"	000279	0.07	000305	0.07	000286	0.010	000315	0.09	000325	0.11
DN65	2 1/2"	000280	0.11	000306	0.11	000287	0.014			000326	0.15
DN75	3"	000281	0.15	000307	0.15	000288	0.016	000317	0.18	000327	0.21
DN100	4"	000282	0.21	000308	0.21	000289	0.020	000318	0.33	000328	0.36
DN150	6"	000283	-	000309	-	000290	-	000319	-		



Materials available:

TEFLON

HS code 39269097

Thread Gasket

## GUILLEMIN Thread Gasket

TYPE	INCH	TEFLON							
		Ref.	Weight/Gr.	Ref.	Weight/Gr.	Ref.	Weight/Gr.	Ref.	Weight/Gr.
DN19	3/4"	005901	0.01						
DN25	1"	005902	0.02						
DN32	1 1/4"	005903	0.03						
DN38	1 1/2"	005904	0.04						
DN50	2"	005905	0.07						
DN65	2 1/2"	005906	0.11						
DN80	3"	005907	0.15						
DN100	4"	005908	0.21						



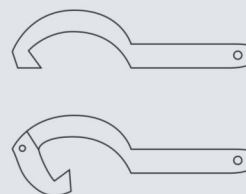
Materials available:

SS316

HS code 73072910

ST

HS code 73071990



Wrench

## GUILLEMIN wrench

TYPE	ST FIXED		SS ADJUST		SS304 DOUBLE ARTICUL.			
	Ref.	Weight/Gr.	Ref.	Weight/Gr.	Ref.	Weight/Gr.	Ref.	Weight/Gr.
DN 25 - 65	006995	0,250						
DN 50 - 100	006996	0,250						
DN 20 - 150 UNIVERSAL	006994	0,170						
DN 50 - 100			006998	0.37				
DN 25 - 150					7000	0.296		



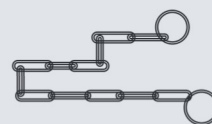
Materials available:

SS316

HS code 73072910

ST

HS code 73071990



Chain

## GUILLEMIN 30 cm Guillemain Chain

INCH	DN	SS316		ST					
		Ref.	Weight/Gr.	Ref.	Weight/Gr.	Ref.	Weight/Gr.	Ref.	Weight/Gr.
1/2"	DN13	000349	0.12	000350	0.12				
3/4"	DN19								
1"	DN25								
1 1/4"	DN32								
1 1/2"	DN38								
2"	DN50								
2 1/2"	DN63								
3"	DN75								
4"	DN100								
5"	DN125								
6"	DN150								



Materials available:

SS316

HS code 73072910

FILTER with Male Thread

## GUILLEMIN Filter

INCH	DN	SS316							
		Ref.	Weight/Gr.	Ref.	Weight/Gr.	Ref.	Weight/Gr.	Ref.	Weight/Gr.
1/2"	DN13	006999	0,159						
3/4"	DN19								
1"	DN25								
1 1/4"	DN32								
1 1/2"	DN38								
2"	DN50								
2 1/2"	DN63								
3"	DN75								
4"	DN100								
5"	DN125								
6"	DN150								