

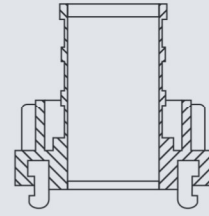
02-STORZ / BARCELONA



Materials available:

ALUA356 T6

HS code 76090000



For hose: delivery

STORZ D for hose: delivery

SIZE	LUG	Hose tail mm.	ALU CASTING		NORM	ALU FORGED		MS	
			Ref.	Weight/Gr.		Ref.	Weight/Gr.	Ref.	Weight/Gr.
25D	31	42	003100	0.11					
42C	66	55	003101	0.38	DIN14332				
52C	66	55	003102	0.36	DIN14302	002002	-		
65	81	60	003103	0.51					
75B	89	60	003104	0.71	DIN14303	002007	-		
110A	133	103	003105	1.06	DIN14323				



Materials available:

ALUA356 T6

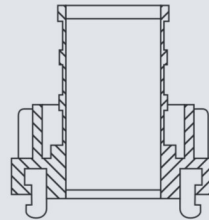
HS code 76090000

SS316

HS code 73072910

MS

HS code 74122000



For Hose: Delivery and suction

STORZ DS for hose: delivery and suction

SIZE	LUG	Ø Hose tail	Long Hose tail mm.	ALU CASTING		ALU FORGED		SS316		MS	
				Ref.	Weight/Gr.	Ref.	Weight/Gr.	Ref.	Weight/Gr.	Ref.	Weight/Gr.
25D	31	20	53	003199	0.09	002010	0.09			003120	-
25D	31	25	53	003200	0.09	002011	0.09	003140	0.26		
38	52	38	90	003201	0.22						
45	59	45	72	003202	0.37						
52C	66	25	90	003207	0.37	002021					
52C	66	32	90	003206	0.37	002023					
52C	66	38	90	003205	0.37	002024					
52C	66	45	90	003211	0.37	002027					
52C	66	52	90	003203	0.37	002029	0.37	003142	0.95	003121	1.06
65	81	52	95	-	-	002033	0.53	-	-	-	-
65	81	65	95	-	-	002034	0.53	-	-	003122	2
65	81	75	95	-	-	002035	0.53	-	-	-	-
75B	89	75	125	003208	0.71	002039	0.71	003145	-		
110A	133	90	170	003204	1.15	002044	1.15				
110A	133	100	170	003209	1.77	002045	1.77	003146	-		
110A	133	110	170	003210	1.66	002046	1.66	003147	4.25		



Materials available:

ALU A356 T6

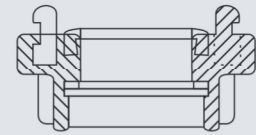
HS code 76090000

SS316

HS code 73072910

MS

HS code 74122000



Female thread

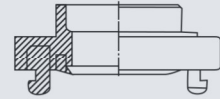
STORZ DS Female Thread

SIZE	LUG	Thread	ALU		SS316		MS		MS	
			Ref.	Weight/Gr.	Ref.	Weight/Gr.	Ref.	Weight/Gr.	Ref.	Weight/Gr.
25D	31	G1/2"							003321	
25D	31	G3/4"	003300	0.09	002050	0.09			003320	
25D	31	G1"	003301	0.09	002052	0.09	003340	0.21	003322	0.23
25D	31	G2"			002054				003323	
32	44	G1"							003324	0.39
32	44	G1 1/4"							003325	
38	51	G1"							003326	
38	51	G1 1/4"							003327	
38	51	G1 1/2"	003302	0.15	002059	0.15			003328	0.44
38	51	G2"			002060	0.18			003329	
45	59	G1 1/2"							003330	
45	59	G2"							003331	
52C	66	G1"	003305	0.28	002064	0.28	003341		003332	
52C	66	G1 1/4"	003303	0.30	002066	0.30			003334	
52C	66	G1 1/2"	003306	0.28	002067	0.28			003335	
52C	66	G2"	003307	0.28	002065	0.28	003342	0.77	003333	0.8
52C	66	G2 1/2"	003308	0.28	002068	0.28			003336	
65	81	G1 1/2"			002072	0.38				
65	81	G2"			002070	0.41			003337	
65	81	G2 1/2"	003309	0.38	002073	0.41			003338	1.12
65	81	G3"			002074	0.41			003339	
75B	89	G2"			002075	0.41			003350	
75B	89	G2 1/2"	003310	0.42	002076	0.42	003344		003351	
75B	89	G3"	003311	0.42	002077	0.45	003345	1.26	003352	1.5
100	115	G4"	003314	0.85						
110	133	G4"	003312	0.85	002080	0.85	003346	3.25	003353	3.77
110	133	G4 1/2"	003316	1.09	002081	1.09			003354	3.77
125	148	G5"	003313							



Materials available:

ALU A356 T6 HS code 73090000
 SS316 HS code 76072910
 MS HS code 74122000



Male Thread

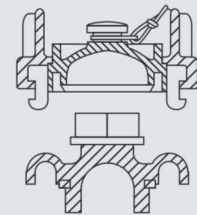
STORZ DS Male thread

SIZE	LUG	Thread	ALU		SS316		MS		MS	
			Ref.	Weight/Gr.	Ref.	Weight/Gr.	Ref.	Weight/Gr.	Ref.	Weight/Gr.
25D	31	G1/2"							003425	
25D	31	G3/4"	003397	0.07	002085				003426	
25D	31	G1"	003400	0.07	002087		003440		003420	
38	52	G1 1/2"	003401	0.12						
52C	66	G1"	003412	0.14	002095					
52C	66	G1 1/4"	003411		002097				003427	
52C	66	G1 1/2"	003402	0.25	002098				003428	
52C	66	G2"	003403	0.21	002096		003441		003421	
52C	66	G2 1/2"			002099					
65	81	G2"	003404	0.36	002100					
65	81	G1 1/2"			002102					
65	81	G2 1/2"	003405	0.38	002103				003422	
65	81	G3"			002104					
75B	89	2"	003410		002105					
75B	89	G2 1/2"	003406	0.36	002106		003442		003423	
75B	89	G3"	003407	0.33	002107		003443		003424	
110	133	G4"	003408	1.01	002109		003444			
125	148	G5"	003409	-						



Materials available:

ALU A356 T6 HS code 73090000
 SS316 HS code 76072910
 MS HS code 74122000



Dustcap

STORZ dustcap

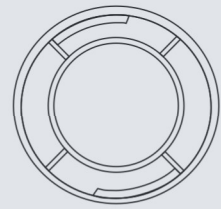
TYPE	LUG	ALU Casting		ALU Forged		SS316		MS		
		Ref.	Weight/Gr.	Ref.	Weight/Gr.	Ref.	Weight/Gr.	Ref.	Weight/Gr.	
25D	31	003500	0.09	002111	0.09	003541	0.25			
45	59	003501	0.3							
52C	66	003502	0.38	002115	0.38	003542	0.88	003619	0.92	
65	81	003503	0.46	002116	0.46			003620	1.27	
75B	89	003504	0.56	002117	0.56	003544	1.34	003621	1.46	
110A	133	003505	1.34	002120	1.34	003545	3.65		3.73	
Hydrant										
	52	003506	0.38							
	75	003507	0.49							
	100	003508	1.23							



Materials available:

ALU A356 T6

HS code 76090000



For Pelet Sistem

STORZ For Pelet System

TYPE			ALU						
	Ref.	Weight/Gr.	Ref.	Weight/Gr.	Ref.	Weight/Gr.	Ref.	Weight/Gr.	Ref.
110A			P03505	0.56					



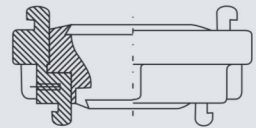
Materials available:

ALU A356 T6

HS code 76090000

SS316

HS code 73072910



Reduction

STORZ Storz Reduction

TYPE	ALU Casting		ALU Forged		SS316		MS	
	Ref.	Weight/Gr.	Ref.	Weight/Gr.	Ref.	Weight/Gr.	Ref.	Weight/Gr.
25D / 52C	003600	0.31	002123		003640			
52C / 75B	003601	0.61	002125		003641			
65 / 75B	003602	-						
75B / 110A	003603	1.57	002127		003642			



Materials available:

ST

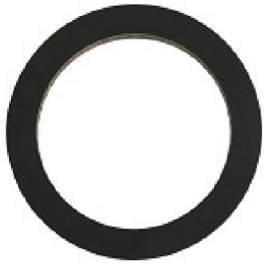
HS code 73071990



Wrench

STORZ Wrench

TYPE	ST								
	Ref.	Weight/Gr.	Ref.	Weight/Gr.	Ref.	Weight/Gr.	Ref.	Weight/Gr.	Ref.
UNIVERSAL	003873	1.31							



Materials available:

NBR	HS code 40169300
SILICON	HS code 40169300
PTFE	HS code 40169300

Gaskets Black/White

STORZ Storz Gaskets for delivery

TYPE	NBR Black		NBR White		Silicon		PTFE	
	Ref.	Weight/Gr.	Ref.	Weight/Gr.	Ref.	Weight/Gr.	Ref.	Weight/Gr.
25D	000655	0.002					000673	-
32	000656	0.004					000674	-
38	000657	0.008	000666	-	000670	-	000675	-
52C	000658	0.011					000676	-
65	000659	0.014					000677	-
75B	000660	0.038	000667	-	000671	-	000678	-
90	000661	-					000679	-
100	000662	-	000668	-	000672	-	000680	-
110A	000663	-	000669	-			000681	-
125	000664	-					000682	-
150	000665	-						



Materials available:

NBR	HS code 40169300
SILICON	HS code 40169300
PTFE	HS code 40169300

Gaskets Black/White

STORZ Gaskets for suction and delivery

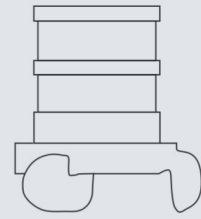
TYPE	NBR black		NBR white		SILICON		EPDM	
	Ref.	Weight/Gr.	Ref.	Weight/Gr.	Ref.	Weight/Gr.	Ref.	Weight/Gr.
25D	000600	0.003	000611	0.003	000622	-	000633	-
32	000601	-	000612	-	000623	-	000634	-
38	000602	0.011	000613	0.011	000624	-	000635	-
52C	000603	-	000614	-	000625	-	000636	-
65	000604	0.016	000615	0.016	000626	-	000637	-
75B	000605	0.043	000616	0.043	000627	-	000638	-
90	000606	-	000617	-	000628	-	000639	-
100	000607	-	000618	-	000629	-	000640	-
110A	000608	-	000619	-	000630	-	000641	-
125	000609	-	000620	-	000631	-	000642	-
150	000610	-	000621	-	000632	-	000643	-



Materials available:

ALU A356 T6

HS code 76090000



For Hose

BARCELONA for hose

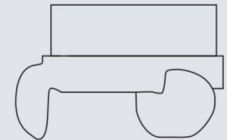
TYPE	ALU die casting		ALU forged						
	Ref.	Weight/Gr.	Ref.	Weight/Gr.	Ref.	Weight/Gr.	Ref.	Weight/Gr.	Ref.
DN25	008369	0.07	008370	0.82					
DN45	008397	0.18	008371	1.71					
DN70	008398	0.36	008372	4.38					
DN100	008399	0.49							



Materials available:

ALU A356 T6

HS code 76090000



Female forged

BARCELONA Female

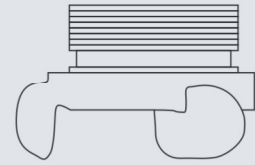
TYPE	ALU Die casting		ALU Forged					
	Ref.	Weight/Gr.	Ref.	Weight/Gr.	Ref.	Weight/Gr.	Ref.	Weight/Gr.
DN19			008380	-				
DN25	008365	0.64	008381	0.62				
DN45	008366	1.04	008382	1.41				
DN70	008367	2.06	008383	2.91				
DN100	008368		008384	-				



Materials available:

ALU A356 T6

HS code 76090000



Male forged

BARCELONA Male

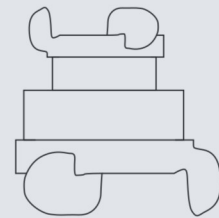
TYPE	ALU Die casting		ALU Forged					
	Ref.	Weight/Gr.	Ref.	Weight/Gr.				
DN19			008385	-				
DN25	008357	0.68	008386	0.61				
DN45	008362	1.56	008387	1.68				
DN70	008363	3.23	008388	2.87				
DN100	008364	-						
DN45			008395	-				
DN70			008396	-				



Materials available:

ALU A356 T6

HS code 76090000



Reduction forged

BAECELONA Reduction

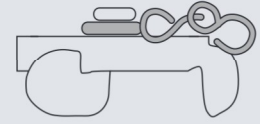
TYPE	ALU Die casting		ALU Forged						
	Ref.	Weight/Gr.	Ref.	Weight/Gr.	Ref.	Weight/Gr.	Ref.	Weight/Gr.	Ref.
DN25 x 45			008390	2.25					
DN45 x 70			008391	2.77					
DN100 x 70			008389	-					



Materials available:

ALUA356 T6

HS code 76090000



Dustcap

BARCELONA Dustcap

TYPE	ALU die casting		ALU forged						
	Ref.	Weight/Gr.	Ref.	Weight/Gr.	Ref.	Weight/Gr.	Ref.	Weight/Gr.	Ref.
DN25	008358	1.01	008392	1.21					
DN45	008359	2.06	008393	1.81					
DN70	008360	4.05	008394	2.41					
DN100	008361	-							



Materials available:

NBR

HS code 40169300

Gaskets

BARCELONA Gasket

TYPE	NBR		NBR Thread					
	Ref.	Weight/Gr.	Ref.	Weight/Gr.	Ref.	Weight/Gr.	Ref.	Weight/Gr.
DN19			000223	0.02				
DN25	000220	0,05	000224	0.04				
DN40			000225	0.07				
DN45	000221	0,15						
DN70	000222	0,27	000226	0.11				